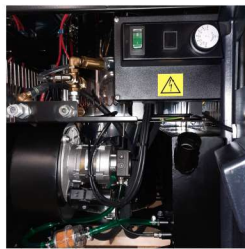
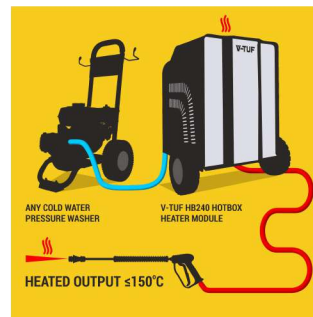


RAPID HB240-21 HOT BOX 240 VOLT HOT WATER PORTABLE BOILER



TURN YOUR COLD-WATER PRESSURE WASHER INTO A HOT WATER UNIT.

- Easy to Use / Easy to Transport.
- Efficiently Convert Cold Water to Hot Water.
- Electrically powered & Diesel Heated Vertical Boiler.
- Flame Control, Flow Switch, & Level Switch.
- 15L Integral Diesel Tank.
- Stainless Steel Cover & Boiler Housing with Powder Coated Steel Frame.
- Delivers up to 140°C.
- Run time on 1 x tank of fuel: Approximately 3 hours



250 BAR
MAXIMUM
PRESSURE

**SAFETY
FEATURES**
LOW WATER
& MAX PRESSURE

HOTWATER
FASTER CLEANING
& COMBAT GERMS

SPECIFICATION

WORKING PRESSURE (BAR)	4 – 250 BAR
WORKING PRESSURE (PSI)	58 – 3625 PSI
MAX FLOW (L/MIN)	25
BOILER OUTPUT:	58Kw/h
BOILER – CLEAN BURN:	DIESEL FIRED
HOT WATER TEMP:	0°C - 145°C
STEAM STAGE:	Yes
VOLTAGE:	240 VOLT
FREQUENCY:	50 Hz
MAX FEED TEMP:	30°C
POWER RATING:	0.5Kw
CABLE LENGTH:	5m
DIMENSIONS LxWxH (cm):	60 X 60 X 85cm
WEIGHT:	120kg
FUEL TANK SIZE:	15 Litre
RUN TIME on 15l fuel:	Approximately 3 hours

Item No.	Description
RAPID HB110-21	V-TUF RAPID HB 110-21 HOT BOX - 110VOLT
RAPID HB240-21	240 VOLT HOT WATER PORTABLE BOILER

